

# SLIP ON UNIT 450 LITERS

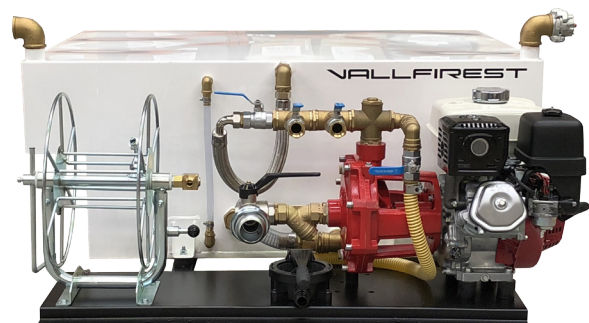
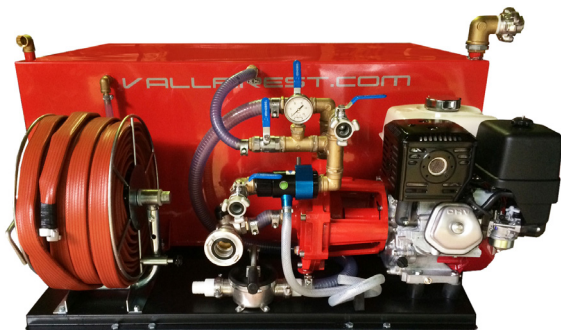
## LOW PRESSURE PUMP

In wildfires, water is essential to extinguish the fire and at the same time it is very scarce, in order to save the system and improve performance, technologies have been developed that allow optimizing and improving the use of this element in terms of efficiency, obtaining equipment of extinction with a smaller weight and volume using a smaller amount of water with the relation with the extinction capacity.

Vallfirest has been working for years in innovation in the design of products, the technology they use and the highest quality manufacturing, bringing together these factors generates the appearance of extinction kits for pick-ups, a product that allows to reach places Practically inaccessible in wildfires with a large deployment fleet in many strategic points of forest land thanks to being a type of light vehicle. When they arrive at the indicated place, they can start pumping the water with a pressure that allows to divide the water jet into small particles that cover the maximum surface of the fire and with the generated steam it is possible to eliminate the oxygen causing the most efficient extinction possible. It is verified that a 50 bar pressure equipment needs approximately 50% less water than a 10 bar equipment. In addition, water can reach long distances when it is pumped.

The extinguishing kits have been designed exclusively for pick-up vehicles. They fit in all vehicles Pick-ups of the market without dependence on brands or models. The measurement of the kit is universal and very easy to assemble.

## TECHNICAL FEATURES



MOTOR	9CV	13CV	OTROS BAJO DEMANDA
<b>BOMBA CENTRÍFUGA (BP)</b>	mod. RD-50/9 14 bar/200 L	mod. RD-50/9 16 bar/248 L	★

There are different configurations for the low-pressure motor pump unit, for each model of centrifugal pump it is advisable to use an engine that provides the necessary power as shown in the tables. You can also choose other motors and pumps according to the customer's needs.

## COMBUSTION ENGINE

There are 4 engine options compatible with the installation of the diaphragm pump: Honda GX270 9 HP, Honda GX390 13 HP, Kohler Command Pro CH395 9.5 HP, Kohler Command Pro CH440 14 HP. All these engines have the characteristic of having a 4-stroke combustion system powered by gasoline fuel.



HONDA GX270 9 CV

HONDA GX390 13 CV

KOHLER COMMAND PRO CH395 9,5 CV

KOHLER COMMAND PRO CH440 14 CV

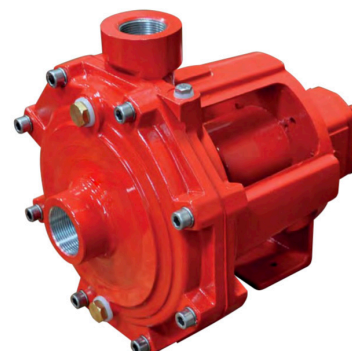
POWER	9 CV	13 CV	9,5 CV	14 CV
STARTING MOTOR	Manual	Manual	Retractable	Retractable
FUEL	Nafta 86 or +	Nafta 86 or +	Gasoline	Gasoline
FUEL TANK	5,3 Liters	6,1 Liters	7 Liters	7 Liters
POWER / rpm	6.3 KW a 3.600 rpm	8,7 KW a 3.600 rpm	7,1 KW a 3.600 rpm (gross)	10,5 KW a 3.600 rpm (gross)

## LOW PRESSURE CENTRIFUGAL PUMP

Centrifugal pump made of anticorrosive and hardened aluminum. Turbines in bronze. Stainless axles on the engine crankshaft. Stainless screws. High quality mechanical seals.

MODELO	MOTOR CV	BOCAS		R.P.M.	H = ALTURA MANOMÉTRICA DE IMPULSIÓN EN METROS										Litros/Hora
		ASP.	IMP.		10	60	70	80	90	100	120	130	140	155	
2-RD-50/9	GX-270 9cv	1 1/2"	1 1/4"	3.200 3.600	15.000 15.500	11.000 11.000	9.500 10.000	8.000 8.500	4.500 6.500	1.500 4.000	1.000				
2-RD-50/13	GX-390 13cv	1 1/2"	1 1/4"	3.200 3.600	15.000 16.500	11.000 12.500	10.500 12.000	10.000 11.500	8.000 11.000	6.000 10.500	1.000 8.000	6.000	4.500	1.000	

	2-RD-50/9	2-RD-50/13
DELIVERY	200 liters/min	248 liters/min
PRESSURE	14 bar	16 bar
POWER	9 CV	13 CV



2-RD-50/9

2-RD-50/13

Water pump installed with a **pressure controller** with barometer and stopcock



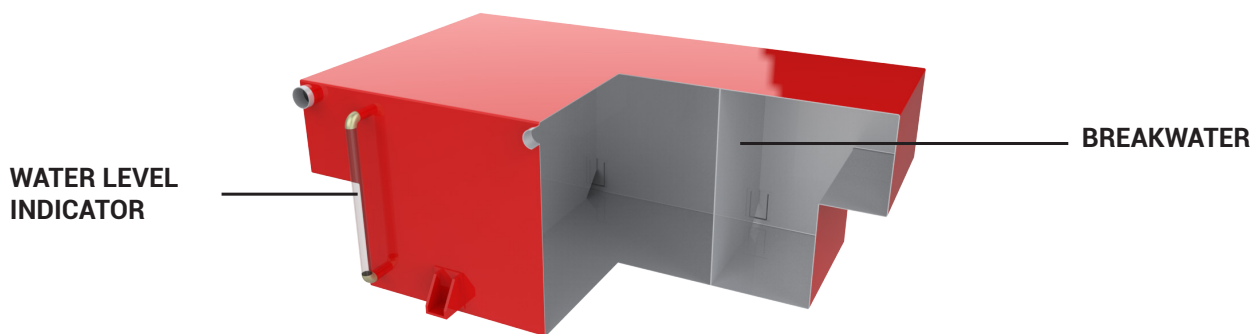
## WATER TANK

Tank of 450 liters capacity. T-shaped to take advantage of the step between wheels and get a low center of mass. Manufactured in stainless steel INOX of 2 mm AISI-304 cold rolled, fire retardant and flame resistant. Painted in the oven, color to choose.

It has 2 internal breakwaters to avoid the water balancing during transport ensuring maximum stability and safety but allowing the center of gravity to be maintained efficiently and the maximum flow of water and air between the 3 compartments.

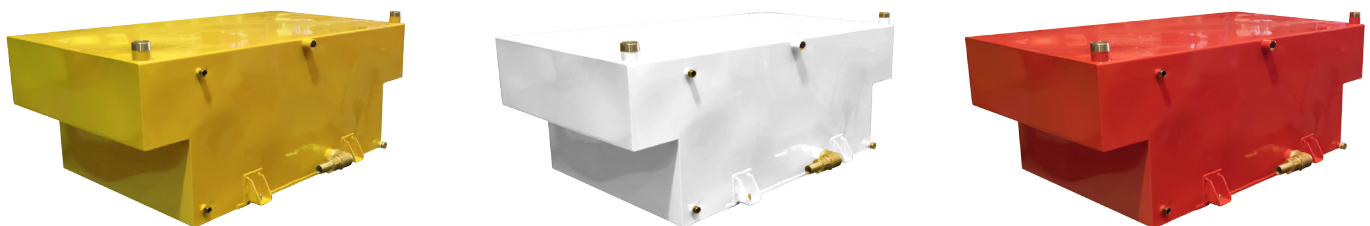
Includes indicator of the water level remaining in the water tank. The connection base of the tank to the motor pump is also made in cold rolled 2 mm AISI-304 INOX. The tank has a 3/4 "drain to empty the tank on the front with a stopper. The connection of the tank to the base is through 4 anchoring points with damping system or sidebrow to absorb load tensions and movements. T-pass wrench for tank and absorption.

There are two standard nozzles located in the horizontal top plane of a 1 and 1/2 "tank, one to charge the tank from a hydrant and another from a vent. There is also an entrance to load the tank by suction with sleeve. Variable weight of 157 kg.



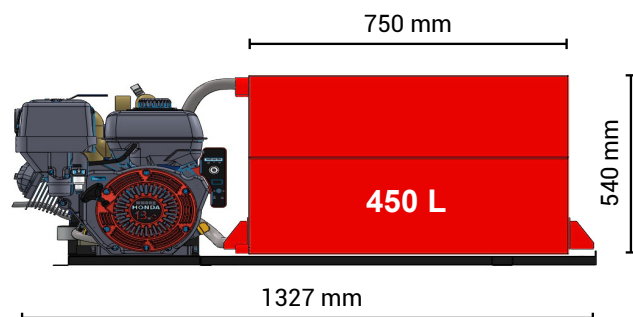
## CUSTOM COLOR

You can choose any painting in the oven for the deposit, there is a predefined range of standard color composed by the color yellow, white, red or the own color of the stainless steel.



## GENERAL DIMENSIONS

**\*The tanks are made to order to adapt to your pick-up and towing vehicles**



## RAPID ATTACK WINDER

Winder mounted on the main structure. 50 meter low pressure hose made of circular fabric, 100% high tenacity yarn, completely protected by a layer of synthetic rubber forming a homogeneous construction. Working pressures up to 40 bar. \* Winder included. \* **Hose not included.**



## LOW PRESSURE NOZZLE

Equipped with a VIPER SG 540 forestry nozzle with 4 selectable flow rates. Additional purge-cleaning position. Tested and calibrated lances individually, designed to work even at 30 bar. Great quality of jet and fog, even at small flow rates (19 liters / min). UNE 23400 fixed connection incorporated (optional rotary). Ergonomic handle with a great comfortable and secure grip. Good behavior in extreme conditions, easy maintenance, resistant and durable. Operational at low pressures and small flow. \* **Spear included.**

<b>MAX PRESSURE</b>	30 bar
<b>DELIVERY</b>	19-150 liters/min
<b>Ø THREAD</b>	1" BSP
<b>WEIGHT</b>	1,25 Kg



## SUCTION HOSE

Translucent handle in white or blue with a length of 5 meters. It serves to suck water from anywhere and fill the extinguishing tank. \* **Suction hose included.**



## POSSIBILITIES OF INSTALLATION IN PICK-UPS

Slip on Unit with 450 liters is designed to be able to go in any Pick-up of simple or double cab with possibility of incorporating a structure adapted to the Pick-up.



**SINGLE OR DOUBLE CABIN**



**KING CAB**

## SUPPLEMENTS FOR THIS KIT

**Low pressure foam kit:** Venturi type in-line foam dispenser with built-in by-pass. Launches Viper Foam with a capacity of 100 L / min.

## Foam System

Compact and easy to use system for mixing foaming agent with 0 to 6% regulation in high pressure, controllable manually from the control panel.

The Venturi system and proportional manual selector valve generate a stable mixture of the foaming agent in the water. This mixture does not circulate at another time inside the pump, protecting it from the corrosion of the foaming products.

The foam supply system can be suctioned from all types of foam drums from different manufacturers without the need to fill special tanks.

### Composed by:

- **NOZZLE VIPER PVB 1560**  
115 lpm  
Weight: 1.310 gr.  
Length: 39 cm.



Modelo	Presión en lanza		Caudal lanzas		Grado Expans.	Alcance efectivo	
	psi	bar	gpm	lpm		feet	metros
PVB - 1560	75	5	30	115	10:1	30	9
	100	7	35	133	10:1	36	11

### · FOAM BYPP IF 100

- Provider of in-line foam type Venturi, with built-in bypass.
- Made of anodized aluminum resistant to corrosion.
- Standard fixed dosage 3% and 6%.
- Customized fixed dosage on demand.
- Check valve to prevent the contamination of the foam concentrate.
- Compatible with any connection.
- Suitable for use in water lines thanks to its WATER-FOAM bypass.
- Recommended for use with our VIPER Foam foam lances.



MODELO	PRESION DE ENTRADA		CAUDAL		PERDIDA CARGA	
	PSI	BAR	GPM	LPM	ESPUMA	BY-PASS
BYPP100	100	7	18	70	39%	7%
	150	10	23	86	39%	7%

**PICTURES OF THE KIT ASSEMBLED IN THE PICK-UP**

